

SINCE 1975

ESQUIRE™

Reliability. Built In.

RELIABILITY.
ALL DAY. EVERY DAY.



**Leading Manufacturer & Exporter of
CONSTRUCTION EQUIPMENT**

**PRODUCT
CATALOGUE**



 www.esquiremachines.com

Hydraulic Hopper Concrete Mixer



Technical Data	EHY 300H / 350 D/E
Capacity(Unmixed)	300/350 Ltrs
Capacity (Mixed)	200/250 Ltrs
Water Volume	500 Ltrs
Power (Diesel Engine)	6 HP
Power (Electric Motor)	5 HP
Drum Base	Cast Iron
Drum Cone	MS, 3.15 mm Thick
No of Bins	1 or 2
Production Rate*	6 - 8CuM/Hr

***40 Batches/Hour**

Features

- Rugged & Reliable Design Principles.
- Built in **Reliability**.
- Hydraulic pump directly mounted on prime mover.
- No misalignment and power loss.
- Pin Type Jacks for stability during operations.
- Easy to transport.
- **Wheels:** Pneumatic or MS Wheels with towing bar.
- **Prime Mover** Electric Motor or Diesel Engine.

Optional

- **Dual Drives:** Electric Motor & Diesel Engine on the same chassis.
- Easy Interchangeability of Power Source.
- **Digital Weighing System:** Load Cell based, with/without Print Facility Monitor & 2 Bin Hopper.
- **Water Tank:** Calibrated Water Tank - 40 Ltrs.
- Water Dispenser System with Hydraulic pump.

Mixer Cum Hoist Concrete Mixer



Technical Data	EMH 300H / 350 D/E
Capacity(Unmixed)	300/350 Ltrs
Capacity (Mixed)	200/250 Ltrs
Water Volume	500 Ltrs
Power	10 HP, Diesel Engine
Winch	Mechanical Winch
Winch Lifting Capacity	450 kg Net / 200 Ltr.
Winch Height	Maximum 20 Metres
Lifting & Downward Speed	33 Mtrs / Min
Production Rate*	5-6 CuM/Hr

***25-30 Batches/Hour**

Features

- Two-In-One combination with mixer & lifting winch.
- Cost Effective & Reliable.
- Easy Installation, Operation & shifting.
- One operator is sufficient to operate mixer as well as hoist.
- Positive Displacement Hydraulic system.
- Reduced Maintenance Expenses & Increased **Reliability**.
- **Prime Mover** Electric Motor or Diesel Engine.

Optional

- **Digital Weighing System:** Load Cell based, with/without Print Facility Monitor & 2 Bin Hopper.
- **Hopper:** Hydraulically Operated Hopper.
- **Mounting:** Scaffolding/ Wall Tie.
- **Tower Structure:** Pole/Channel/1.5 Mtrs. Tower.

Suspended Rope Platform



Roof Support Device

Model			ESP 1000	ESP 800
Rated Load (kg)			1000 kg	800 kg
Wire Rope Dia Ø (mm)			10.2 mm	9.1 mm
Maximum Height			100 mtrs.	100 mtrs.
Ascend Speed			8.0 m/min	9.0 m/min
Suspended Platform size (L x W)			(2.5m x 2 nos.) + (1.5 x 1 no.) + (1m x 1 no.) - (L) 7.5m x (W) 0.69m	(2.5m x 2 nos.) + (1.5 x 1 no.) + (1m x 1 no.) - (L) 2.5m x (W) 0.69m
Platform Structure			Hot Dip Galvanized / Painted	Hot Dip Galvanized / Painted
Hoist	Hoist Model		LTD 100	LTD 80
	Rated Lifting Force		10 KN	8 KN
	Electric Motor	Power	2.0 Kw x 2 nos.	1.8 Kw x 2 nos.
		Voltage	415V, 50 Hz	415V, 50 Hz
		Braking torque	15 Nm.	15 Nm.
Safety lock type	Impact Force		30KN	30KN
	Locking Distance		<100 mm	<100 mm
	Locking Angle		3 - 8°	3 - 8°
Suspension mechanism	Height Adjustment		1.15m-1.75m	1.15m-1.75m
	Front Beam Extent		1.1m-1.75m	1.1m-1.75m
Machine Weight	Suspended Platform (inc. Hoist, safety lock, Electric control box)		650 kgs.	530 kgs.
	Counter Weights		1.2 ton (48 nos.)	1 ton (40 nos.)

Features

- **Reliability** Built in Safety System.
- Anti - Tilting Safety Lock For Breakage.
- High Quality Steel Wire Rope.
- Upper Limit Switches.
- Control Panel with Emergency Stop
- Remote Control.

Upper Limit Switch



Centrifugal Speed Limit



Anti Tilt Safety lock



Remote Control



Hoist Motor

Control Panel



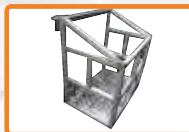
Optional

- Side Extension
- Front Extension
- Parapet Clamp

Side Extension



Front Extension



Parapet Clamp



Note: The technical specifications of the products may vary depending on the models, and are subject to change without prior notice.

Rack & Pinion Multifunctional Tower Hoist



Technical Data	ETR 100	ETR 150
Gross Load	1000 kg.	1200 kg.
Net Load	750 kg.	1000 kg.
Gear Rack Module	5	5
Speed	30 Mtr./Min	30 Mtr./Min
Height	120 Mtr.	120 Mtr.
Mast Section	Square 500mm X 400mm X 1.5 Mtr. L50X50X6mm Angle	Square 500mm X 400mm X 1.5 Mtr. L50X50X6mm Angle
Wall Tie Interval	6 Mtr.	6 Mtr.
Cable Guide Interval	6 Mtr.	6 Mtr.
Rect. Cage. (Inside)	1.5(L)X0.8(W)X0.7(H) Mtr.	1.5(L)X0.8(W)X0.7(H) Mtr.
Motor Power	1 X 6.9 KW	1 X 9.5 KW
VFD	7.5 KW	11 KW
Power Supply	400V(±5%) 50 Hz	400V(±5%) 50 Hz

Features

- Centrifugal Brake (safety device).
- Cage doors limit switch.
- Top limit switch.
- Bottom limit switch.
- Over travel final limit switch at top/bottom ends.
- Rack search limit switch.
- Emergency stop (on cage control panel & Remote pendant).
- Power supply main switch.
- Hand release break for Emergency reach to nearest lower floor.
- Rebar Home Position Limit Switch.

Optional

- Concrete Bucket Tilting Type.
- Rebar carrier 7 Mtr long Horizontal (500kg).
- Erection Crane Manual type.
- Floor Selection.
- Load Cell.



Centrifugal Safety Device



Drive Unit

Material Hoist (Wire Rope)

Winch Unit
(Brake Motor)



Winch Unit
(Conventional)



Technical Data	ETB 1000	ETB 1500
Gross Load	1000 Kgs	1500 Kgs
Net Load	750 Kgs	1200 Kgs
Wire Rope	12 mm	12 mm
Diesel Engine	NA	NA
Electric Motor	10 HP*/12.5 HP	12.5 HP
Speed	30-35 Mtr/Min	30-35 Mtr/Min
Max Height	125 Metres	125 Metres
Mast Section	500mm x 400mm x 1.5Mtr. 50 x 50 x 6mm high tensile material	
Rectangle cage (Inside)	1320 x 800 x 610 mm	1400 x 1000 x 500 mm

*Upto 80 Mtrs.

Technical Data	ETC 750	ETC 1000	ETC 1500
Gross Load	750 Kgs	1000 Kgs	1500 Kgs
Net Load	500 Kgs	750 Kgs	1200 Kgs
Wire Rope	10 mm	12 mm	12 mm
Diesel Engine	10 HP	12 HP	16 HP
Electric Motor	10 HP*/12.5 HP	12.5 HP	15 HP
Speed	30 Mtr/Min	30 Mtr/Min	30 Mtr/Min
Max Height	40 Metres	60 Metres	65 Metres
Mast Section	380mm x 300mm x 2.5Mtr. 65 x 65 x 6mm		500mm x 300mm x 2.5Mtr. Front 65 x 65 x 8mm Rear 65 x 65 x 6mm

*Upto 80 Mtrs.

Features

- The State of Art Design.
- Built in **Reliability** & Safety.
- Sturdy & Rugged Structure.
- Inbuilt Mechanical Locking System / Free Fall Protection.
- Power Fail Safe Brake Motor.
- Top & Bottom Limit Switch with Brake Motor Hoist.
- Mechanical Safety Device for Bucket

Optional

- Scaffolding or Wall Tie Ins.
- Bucket Options:
 - Tilting Bucket
 - Rectangular Bucket
 - Multi Utility Bucket
- Interchangeable Bucket
- Re-Bar Carrier (7Mtr) - Horizontal(500kg).
- Floor Selection
- Erection Crane
- Wheels
 - Pneumatic / MS Wheel / Foundation Type



Tilting Bucket
0.3 - 0.4 Cum/Mtr



Re-Bar Carrier